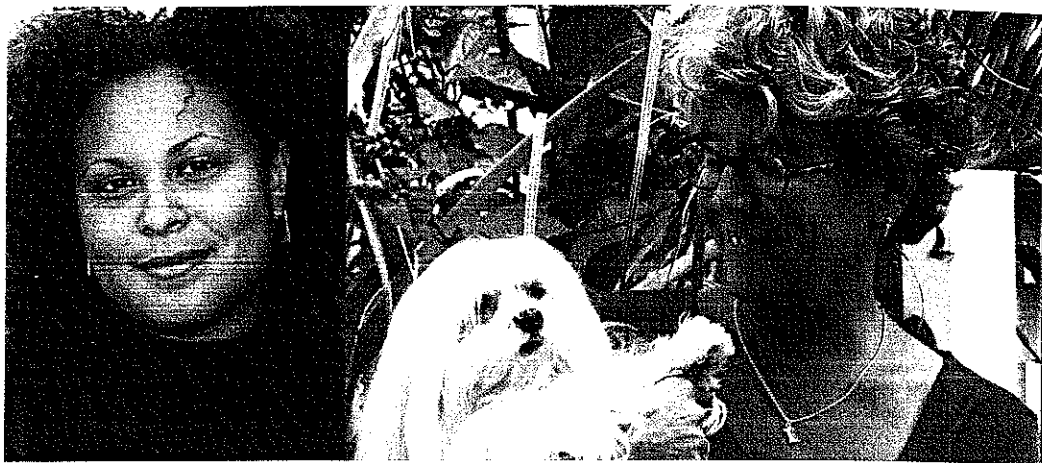


THE 2010
WOODROW WILSON
DISSERTATION FELLOWSHIPS IN
WOMEN'S STUDIES



THE WOODROW WILSON
National Fellowship Foundation



ABOUT THE WW WOMEN'S STUDIES FELLOWSHIP

The Woodrow Wilson Dissertation Fellowships in Women's Studies encourage original and significant research about women and gender that crosses disciplinary, regional, or cultural boundaries, including but not limited to, intersectionality, feminist theory and post-colonial studies. Previous Fellows have explored such topics as women, race and AIDS; lesbian spaces and economy; debating family values; race and pornography; international marriage migration.

THE WW WOMEN'S STUDIES FELLOWS FOR 2010

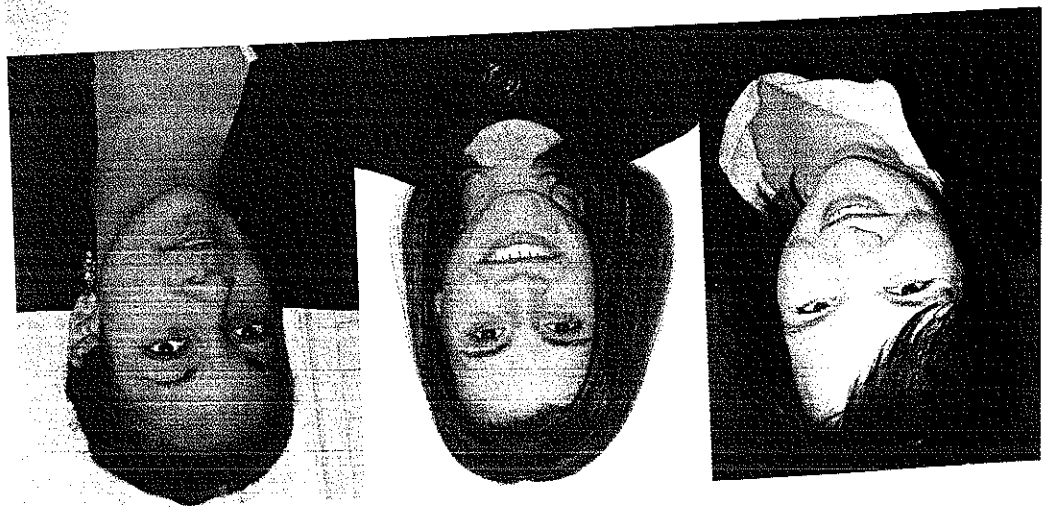
The 2010 recipients of Woodrow Wilson Dissertation Fellowships in Women's Studies will receive up to \$3,000 to be used for expenses connected with the dissertation. These may include, but are not limited to, travel, books, microfilming, taping, and computer services. Recipients will be announced in late January 2010.

ELIGIBLE CANDIDATES

Students in doctoral programs in any field of study at graduate schools in the United States are eligible to apply. Candidates must have completed all pre-dissertation requirements, including approval of the dissertation proposal. Candidates should expect to complete their dissertation between January and August 2011. Candidates who are within a few months of completing their work should not apply.



WW WOMEN'S STUDIES FELLOWS DEPICTED: Cover, l to r, 2009 Fellows: Reese Kelly, U at Albany; Ofelia Villero, Graduate Theological Union; Katherine Gallagher, U of Michigan; Inside left top, l to r: Mireille Miller-Young WS '03, UCSB; Leila Rupp WS '75 (with Phoebe), UCSB; Inside left bottom: Kristin Brandser Kalsem WS '99, U of Cincinnati; Inside right top, l to r: Sandra Eder WS '09, Johns Hopkins; Stacie Taranto WS '08, Brown; Jennifer Nash WS '08, Harvard; Inside right bottom: Nadia Guessous WS '08 (far right), Columbia, and friends.



APPLICATIONS

Applications must be filed electronically and are available online at www.woodrow.org/womens-studies. Components of the application to be filed online include an abstract (maximum of 200 words); a dissertation proposal no longer than six pages, double-spaced (approximately 2,000 words), outlining the dissertation and discussing its relevance to women and gender studies; a two-page selected bibliography; a one-page timetable for completion; and a statement of commitment to women and gender studies. In addition to the online application, a graduate transcript from the applicant's Ph.D. institution and two letters of recommendation—one from the dissertation director and one from another faculty member—must be separately submitted. Applications will be judged on originality and significance to women and gender studies, scholarly validity, the applicant's academic preparation/ability to accomplish the work, and whether the dissertation will be completed within a reasonable time period.

DATES AND DEADLINES

- ▲ All applications and supporting documents must be received by October 11, 2009.
- ▲ Notification of awards will be made in January 2010.
- ▲ Award ceremony begins in February 2010.

SELECTION COMMITTEES

Woodrow Wilson Women's Studies Fellows are selected in two stages. Committees of noted scholars review applications for excellence in their fields and choose the finalists in the competition. A final interdisciplinary committee makes choices based on the overall quality of the proposal, its originality, scholarly validity, the applicant's academic preparation and ability to accomplish the work within a reasonable

time period. In addition, the committee considers the contribution of the dissertation to understanding of women and gender issues, as well as the candidate's commitment to scholarship on women and gender. Notably, a number of the Fellows volunteer their time as reviewers to help select new Women's Studies Fellows and enthusiastically support the next generation of scholars.

THE WW WOMEN'S STUDIES FELLOWSHIP AND THE WOODROW WILSON NATIONAL FELLOWSHIP FOUNDATION

Funded by the Ford Foundation, the Hans Rosenhaupt Memorial Endowment, and private donors, the Woodrow Wilson Dissertation Fellowship in Women's Studies is the only national program supporting dissertation work on women's and gendered issues. Since its inception in 1974, the Fellowship has funded nearly 500 emerging scholars, many now prominent in their fields. They are college presidents, distinguished faculty members, artists and novelists, and (in some cases) leaders in business, government, and the nonprofit sector. They include a Pulitzer Prize winner, two MacArthur Fellows,

seven Guggenheim Fellows, a number of Fulbright Fellows, and many others who have achieved significant distinction.

For more than sixty years, the Woodrow Wilson National Fellowship Foundation has sought to identify and develop America's best minds for its most essential professions. Particularly concerned with historically disadvantaged populations, the Foundation seeks to address the nation's most urgent educational problems, champion academic excellence, and expand educational opportunity.

IF YOU'RE INTERESTED

Please visit www.woodrow.org/womens-studies and review the information provided. If after reviewing these pages you have further questions, please contact Susan Billmaier, Assistant Program Director, at Billmaier@woodrow.org.



PROGRAM DIRECTOR:
Cynthia R. Daniels WS '81, Ph.D., directs the Women's Studies Dissertation Fellowship Program and is also

Department Chair of Political Science at Rutgers University.

WW WOMEN'S STUDIES FELLOWSHIPS

THE WOODROW WILSON NATIONAL FELLOWSHIP FOUNDATION

Street address: 5 Vaughn Drive, Suite 300, Princeton, NJ 08540

Mailing address: P.O. Box 5281, Princeton, NJ 08543

Telephone: 609-452-7007 x310

Email: Billmaier@woodrow.org • www.woodrow.org/womens-studies