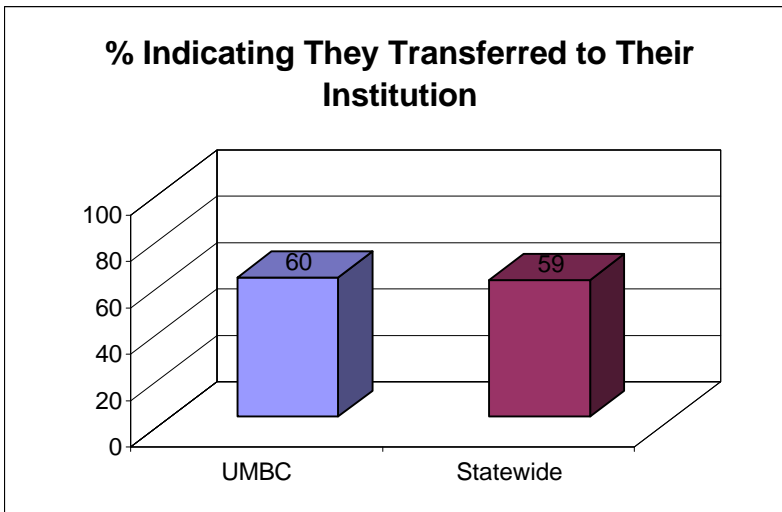
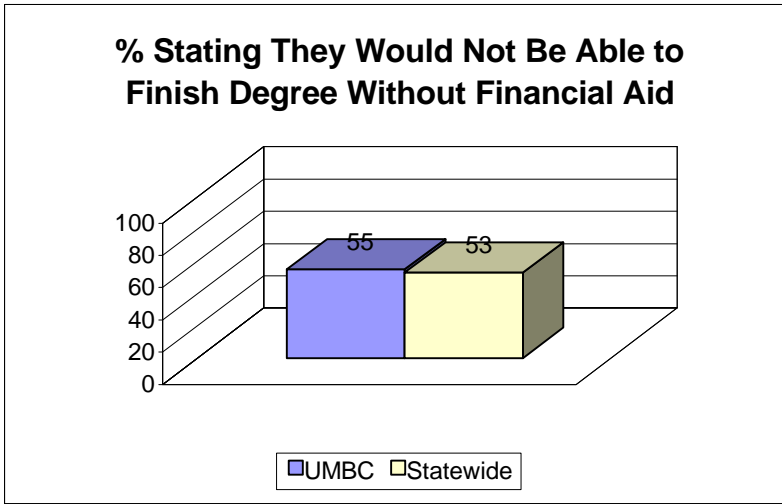


University of Maryland Baltimore County (UMBC)

MHEC; Statewide Responses to the Survey of 2001 Bachelor's Degree Recipients, January 2003.

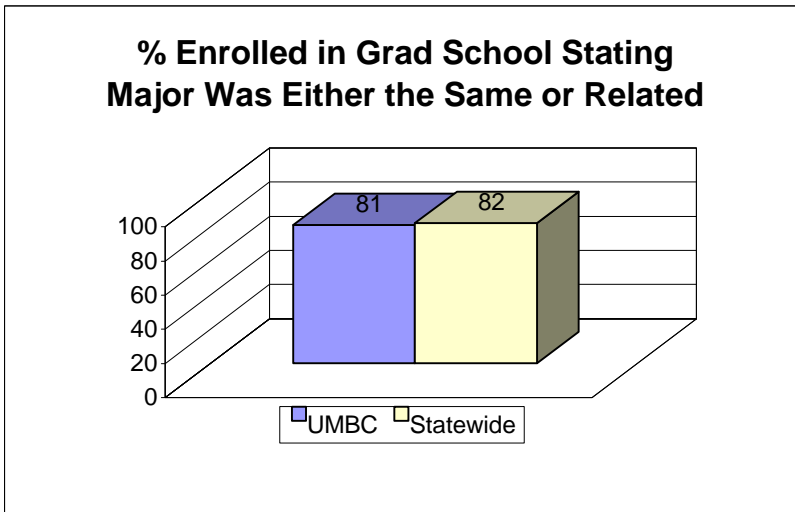
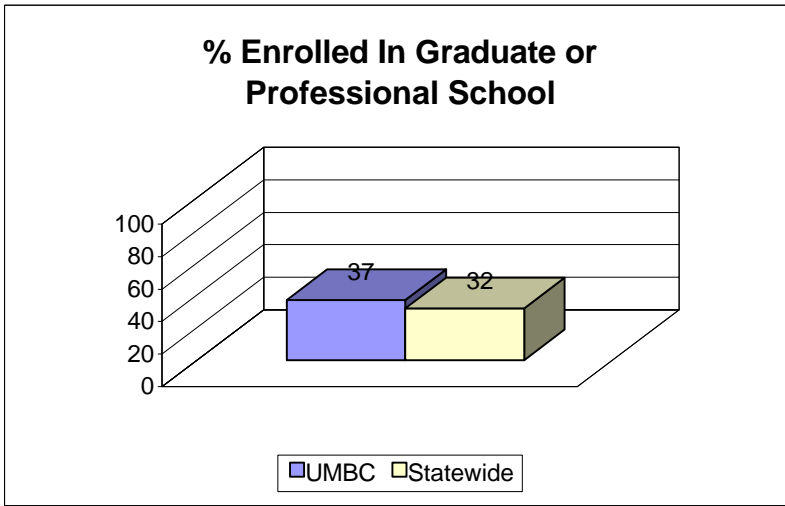
Statewide represents a weighted avg. of all responses from MD public four-year institutions.



University of Maryland Baltimore County (UMBC)

MHEC; Statewide Responses to the Survey of 2001 Bachelor's Degree Recipients, January 2003.

Statewide represents a weighted avg. of all responses from MD public four-year institutions.

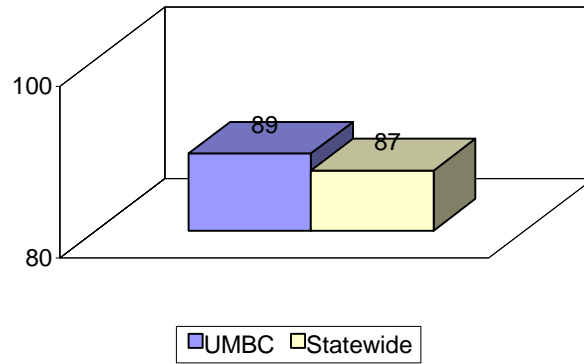


University of Maryland Baltimore County (UMBC)

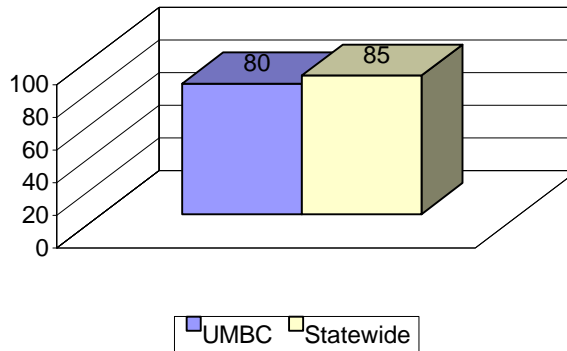
MHEC; Statewide Responses to the Survey of 2001 Bachelor's Degree Recipients, January 2003.

Statewide represents a weighted avg. of all responses from MD public four-year institutions.

% Enrolled in Grad School Stating Preparation Was Excellent or Good



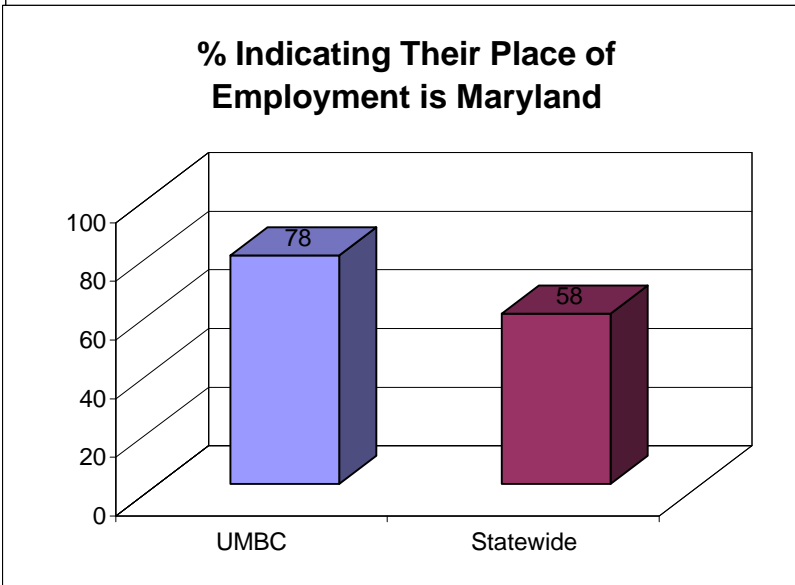
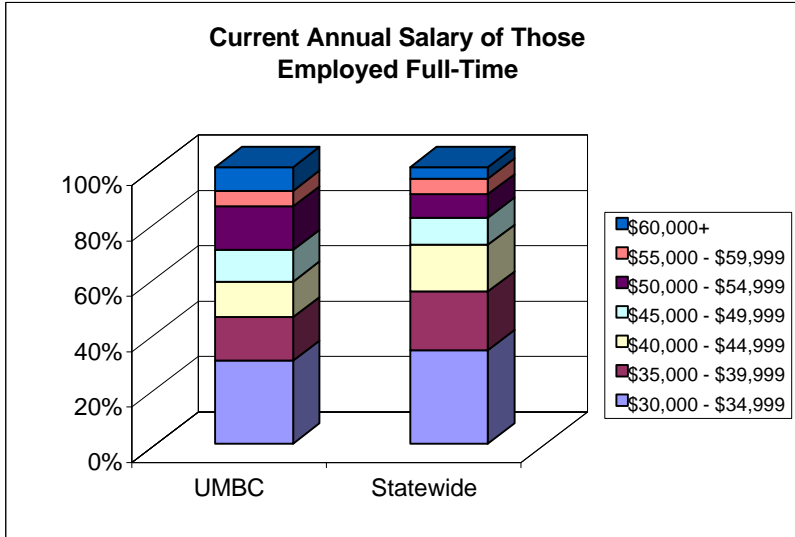
% Stating They Were Employed Full-Time



University of Maryland Baltimore County (UMBC)

MHEC; Statewide Responses to the Survey of 2001 Bachelor's Degree Recipients, January 2003.

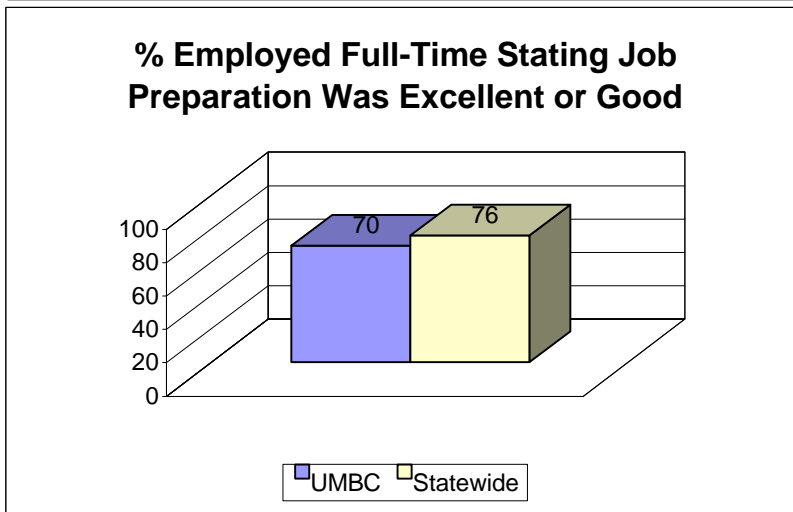
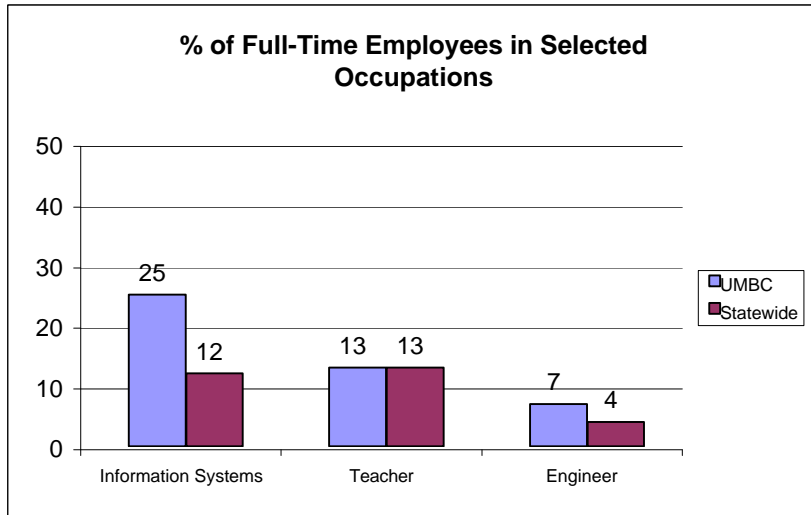
Statewide represents a weighted avg. of all responses from MD public four-year institutions.



University of Maryland Baltimore County (UMBC)

MHEC; Statewide Responses to the Survey of 2001 Bachelor's Degree Recipients, January 2003.

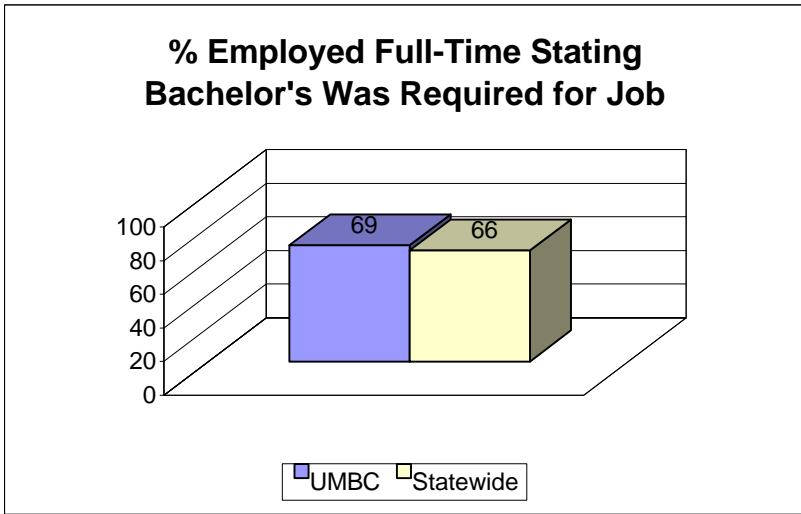
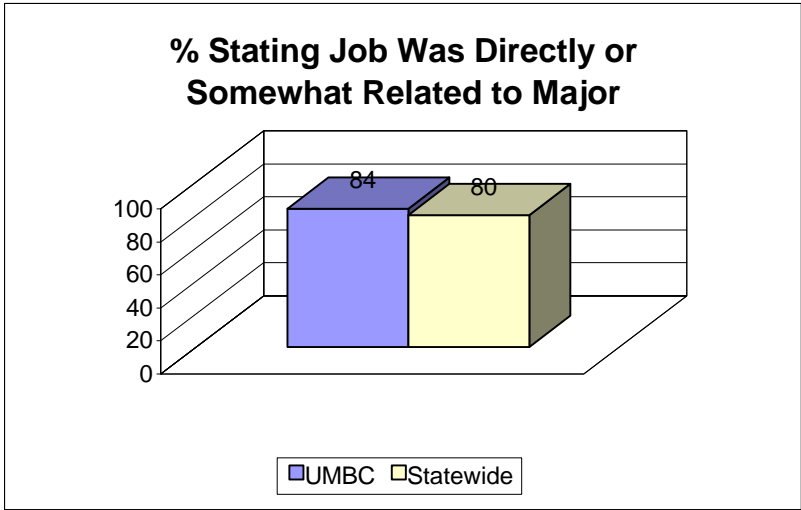
Statewide represents a weighted avg. of all responses from MD public four-year institutions.



University of Maryland Baltimore County (UMBC)

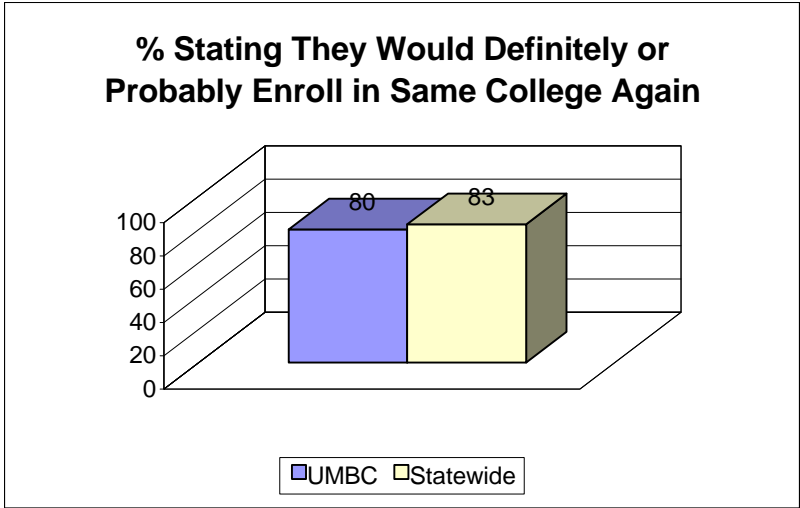
MHEC; Statewide Responses to the Survey of 2001 Bachelor's Degree Recipients, January 2003.

Statewide represents a weighted avg. of all responses from MD public four-year institutions.



University of Maryland Baltimore County (UMBC)

MHEC; Statewide Responses to the Survey of 2001 Bachelor's Degree Recipients, January 2003.
Statewide represents a weighted avg. of all responses from MD public four-year institutions.



University of Maryland Baltimore County (UMBC)

MHEC; Statewide Responses to the Survey of 2001 Bachelor's Degree Recipients, January 2003.
 Statewide represents a weighted avg. of all responses from MD public four-year institutions.

**The Survey of 2001 Bachelor's Degree Recipients
 MHEC Comparisons**

	389 <u>UMBC</u>	4649 <u>Statewide</u>
Those stating they would NOT be able to finish degree without financial aid	55	53
If you enrolled in school again, % seeking graduate/prof	37	32
Employed full-time	80	85
Would you attend the same college, def/prob yes	80	83
Preparation for job, % rating excellent or good	70	76
Job related to college major, % saying directly or somewhat	84	80
A bachelor's degree was required for job	69	66
If enrolled in school again, major was either the same or different but related to undergrad major.	81	82
% that would rate preparation for grad school either exc. Or good	89	87
	UMBC	Statewide
\$30,000 - \$34,999	21	24
\$35,000 - \$39,999	11	15
\$40,000 - \$44,999	9	12
\$45,000 - \$49,999	8	7
\$50,000 - \$54,999	11	6
\$55,000 - \$59,999	4	4
\$60,000+	6	3
<\$20,000	7	6
\$20,000 - \$24,999	7	9
\$25,000 - \$29,999	16	15
	UMBC	Statewide
Place of Employment, Maryland	78	58
Type of Occupation - Full-Time Only		
Information Systems	25	12
Teacher	13	13
Engineer	7	4
	UMBC	Statewide
Transferred to Institution	60	59