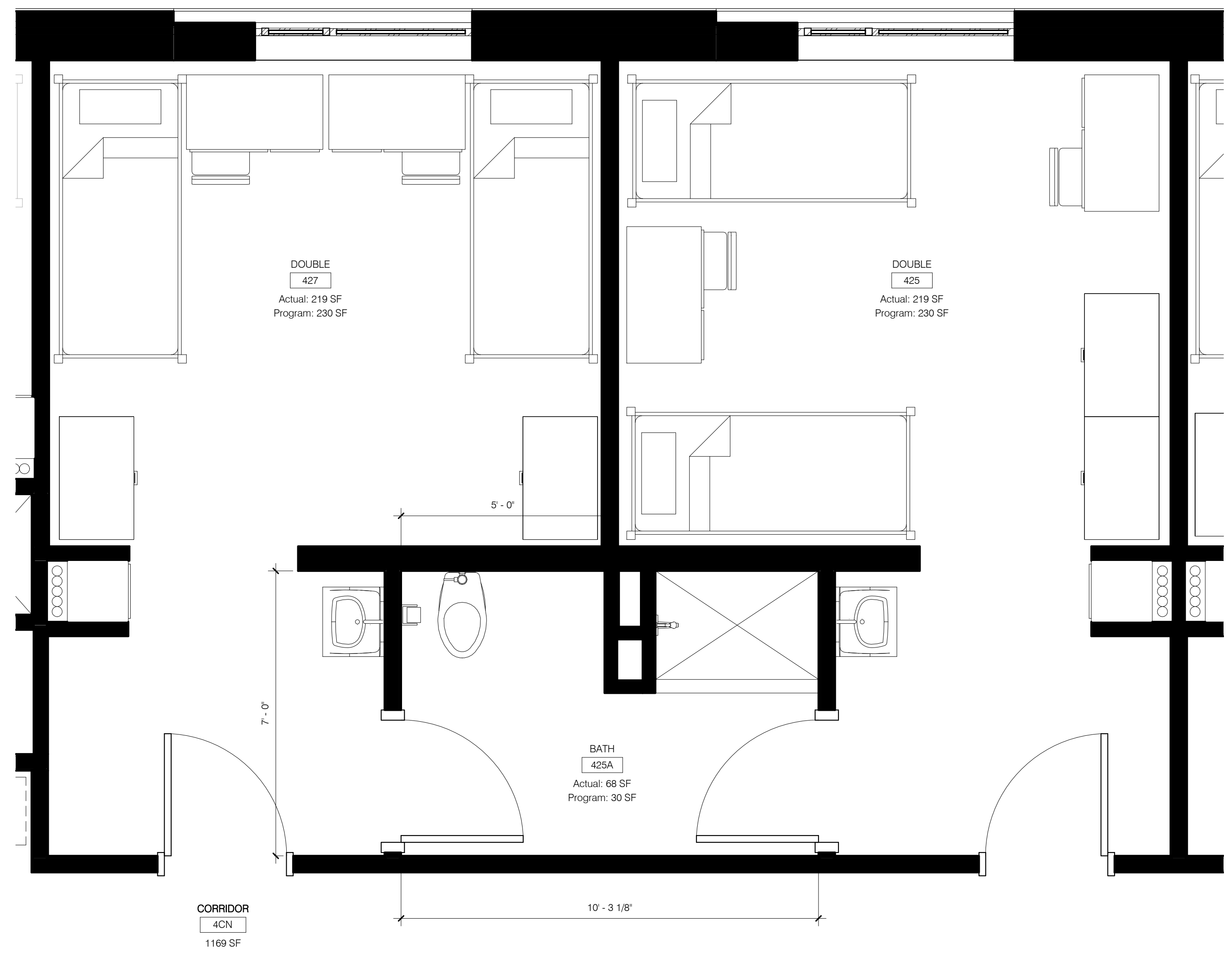


2 NORTH - SOUTH WING, DD LAYOUT
X2.00 1/2" = 1'-0"

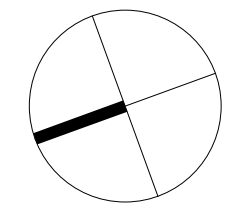


1 NORTH - SOUTH WING, TYPE 'B' COMPLIANT LAYOUT
X2.00 1/2" = 1'-0"



PATAPSCO HALL ADDITION PROJECT AT UMBC

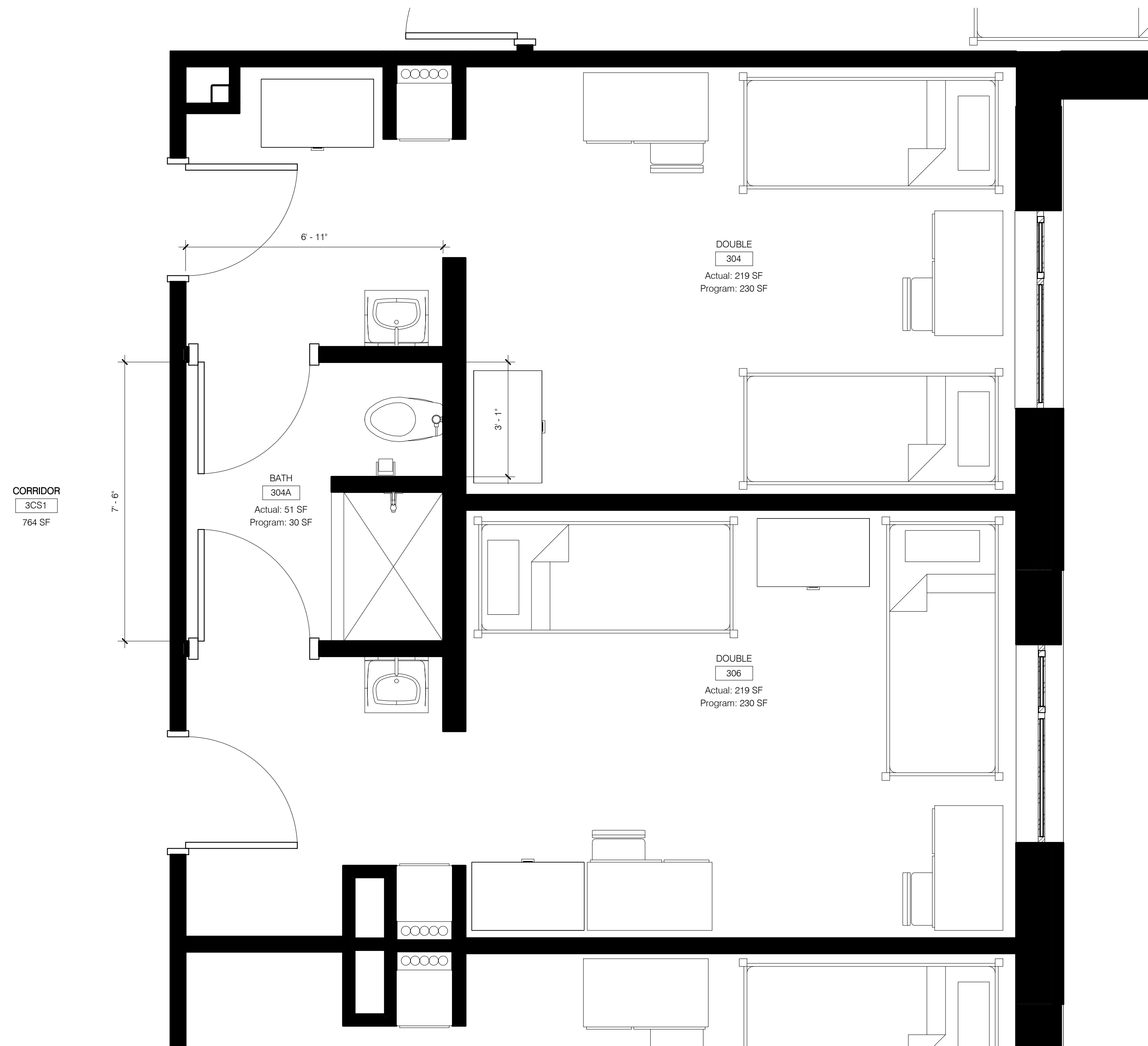
UMBC PROJECT NUMBER BC-20632-T
NEWMAN PROJECT NUMBER 1003.00
06/01/10



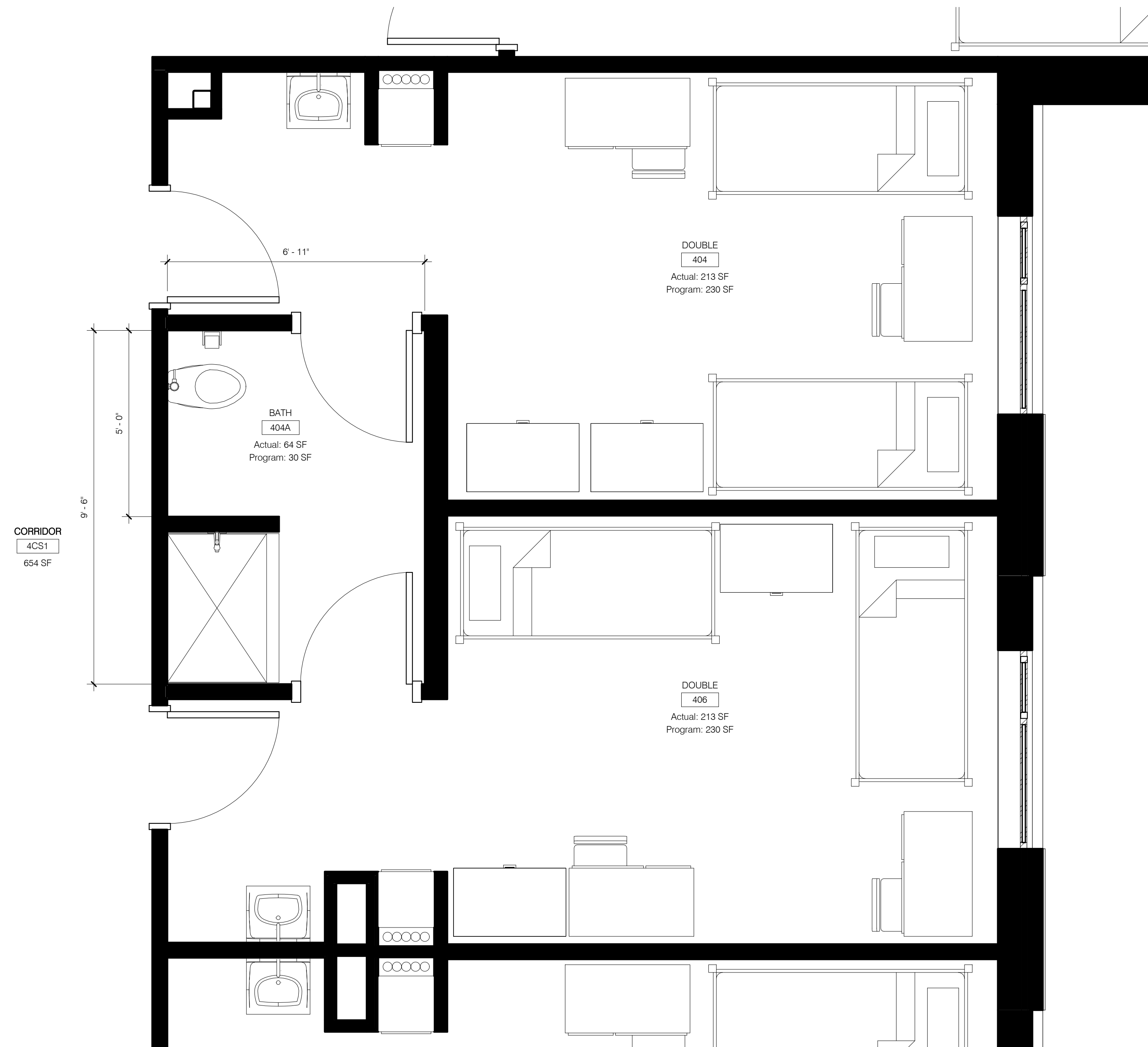
NEWMAN ARCHITECTS

© 2010

KBE BUILDING CORPORATION
FORMERLY KONOVER CONSTRUCTION CORPORATION



1 EAST - WEST WING, DD LAYOUT
X2.01 1/2" = 1'-0"

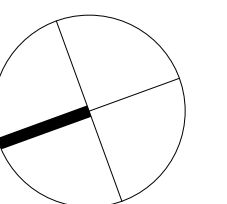


2 EAST - WEST WING, TYPE 'B' COMPLIANT LAYOUT
X2.01 1/2" = 1'-0"



PATAPSCO HALL ADDITION PROJECT AT UMBC

UMBC PROJECT NUMBER BC-20632-T
NEWMAN PROJECT NUMBER 1003.00
06/01/10



NEWMAN ARCHITECTS

© 2010

KBE BUILDING CORPORATION
FORMERLY KONOVER CONSTRUCTION CORPORATION