

Resource Sheet #2

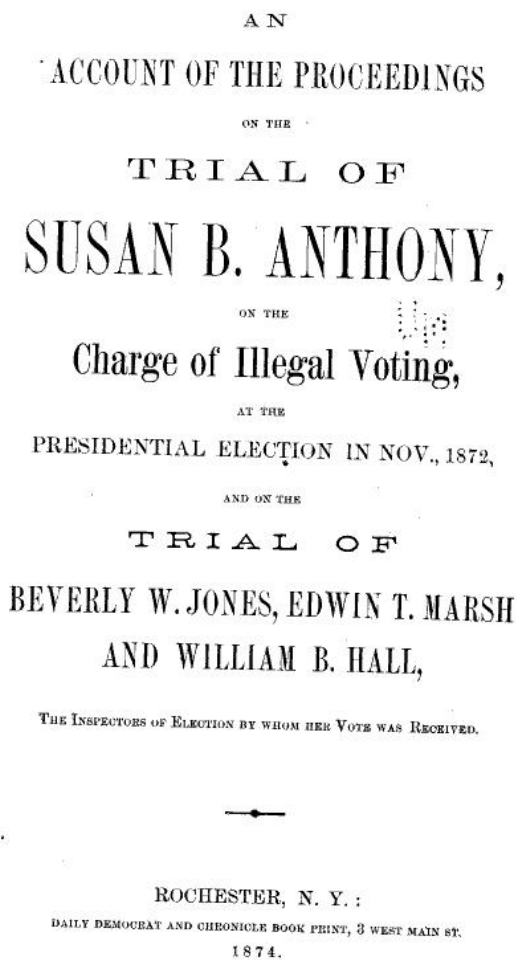
Name _____

Date _____ Pd _____

Women's Rights DBQ

Directions: Carefully examine each of the following documents. After analyzing each document, answer the accompanying questions. (The date of each document has been included for you—think about how women's rights changed over time.)

Document 1 (1874):



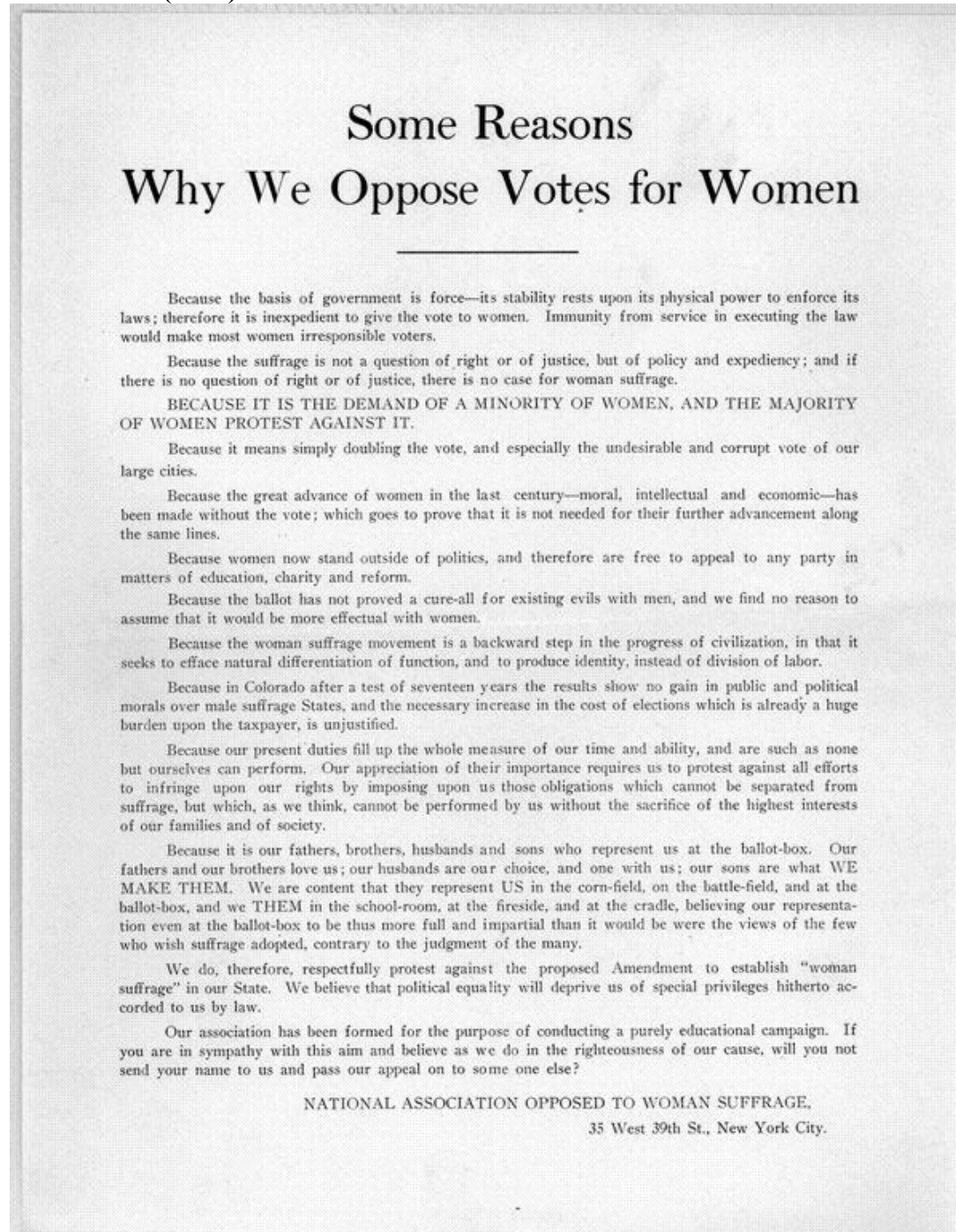
Document 1 Questions:

What is the subject of the document?

How might the subject of the document support or hinder women's rights?

What do you believe was the outcome of the trial?

Document 2 (1894):



<http://memory.loc.gov/rbc/rbpe/rbpe13/rbpe130/1300130c/001dq.gif>

Document 2 Questions:

Who do you believe wrote this document—men or women? _____

What do the authors believe is the role of women? _____

Document 3 (1896):



<http://memory.loc.gov/service/pnp/cph/3a10000/3a13000/3a13200/3a13267r.jpg>

Document 3 Questions:

Who is depicted in the center of the cartoon? _____

Why is this person surrounded by women? _____

What are the names of the two women sitting on either side of the man? Why do you think that the artist chose these two women? _____

Document 4 (1909):

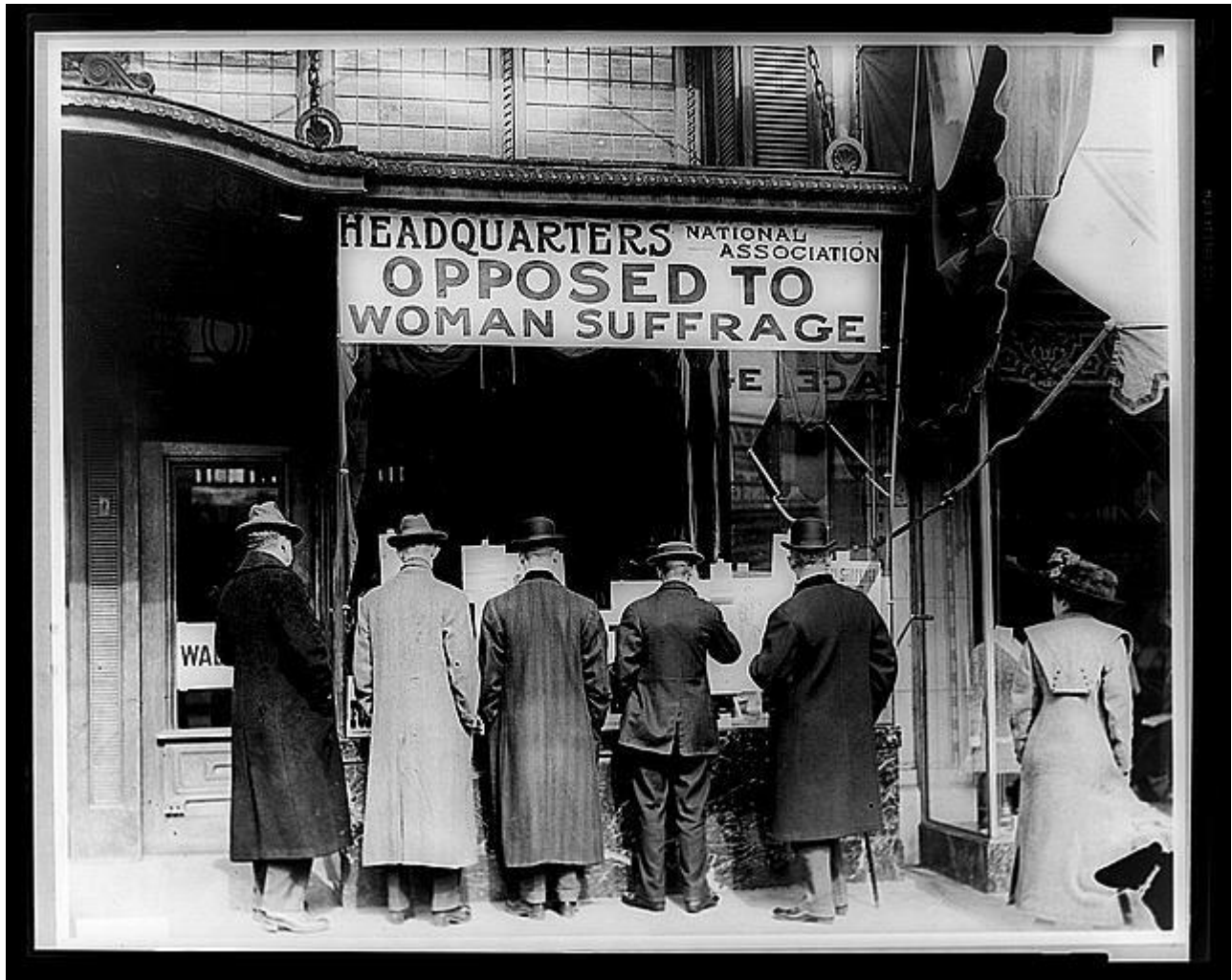


<http://memory.loc.gov/service/pnp/cph/3a50000/3a51000/3a51800/3a51845r.jpg>

Document 4 Question:

How does the cartoon portray the shift in society as a result of women's suffrage?

Document 5 (1911?):



<http://memory.loc.gov/service/pnp/cph/3a20000/3a26000/3a26200/3a26270r.jpg>

Document 5 Questions:

Who is standing outside of the Headquarters? _____

What do these people demonstrate about society? _____

Document 6 (1912):



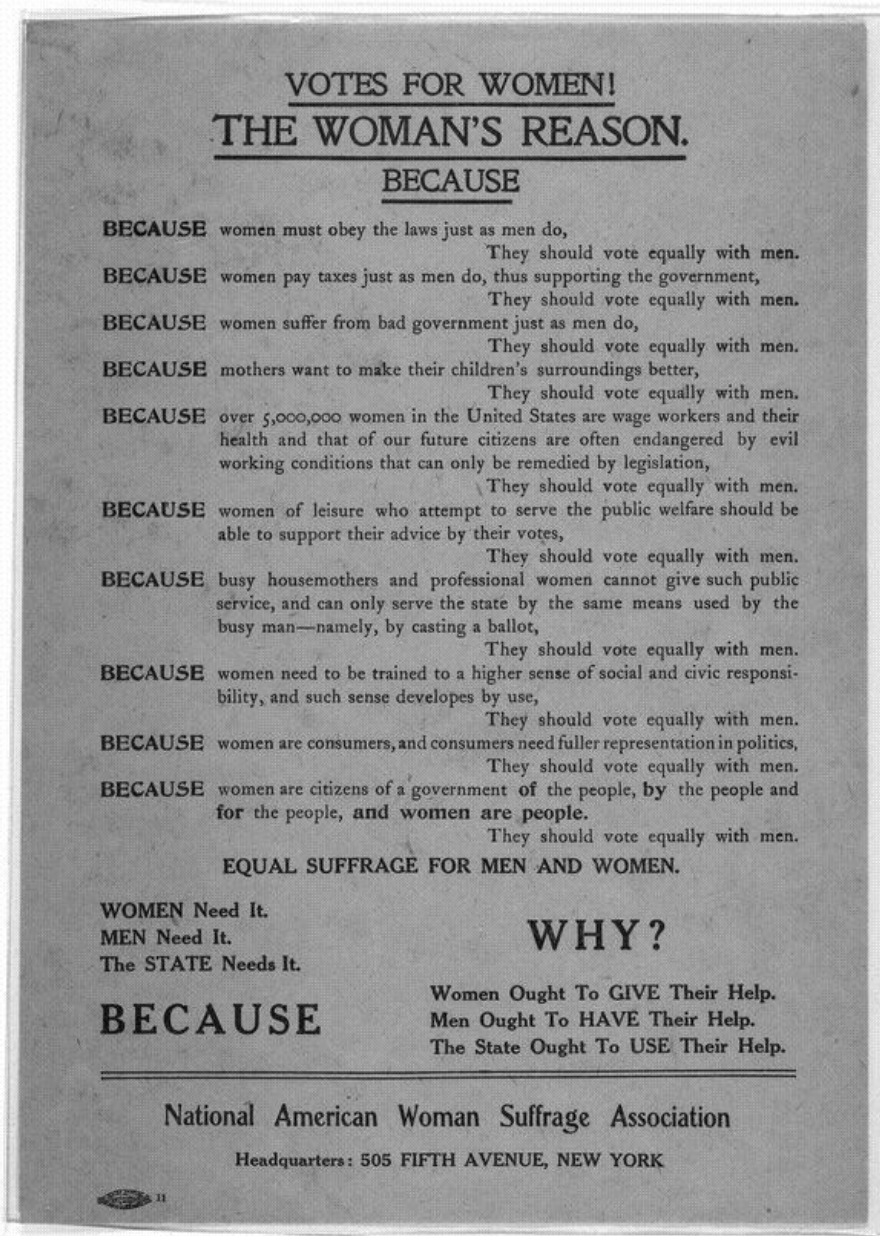
<http://memory.loc.gov/service/pnp/cph/3g00000/3g05000/3g05500/3g05585r.jpg>

Document 6 Questions:

Read the banner behind the women. For what rights are they marching?

Why might it be significant that a baby and a young girl are participating in the march?

Document 7 (1912):



<http://memory.loc.gov/rbc/rbpe/rbpe13/rbpe132/13200400/001dq.gif>

Document 7 Questions:

Why are the women requesting the right to vote? Provide at least 3 reasons.

Educational materials were developed through the Teaching American History in Anne Arundel County Program, a partnership between the Anne Arundel County Public School System and the Center for History Education at the University of Maryland, Baltimore County.

Does their argument seem reasonable? _____

Document 8 (1917):



<http://memory.loc.gov/service/pnp/cph/3a30000/3a32000/3a32300/3a32338r.jpg>

Document 8 Questions:

Based on what you can tell from the picture and picket signs, where are the women located?

What are the women wearing on their sashes? Are these words significant? Why or why not?

Educational materials were developed through the Teaching American History in Anne Arundel County Program, a partnership between the Anne Arundel County Public School System and the Center for History Education at the University of Maryland, Baltimore County.